

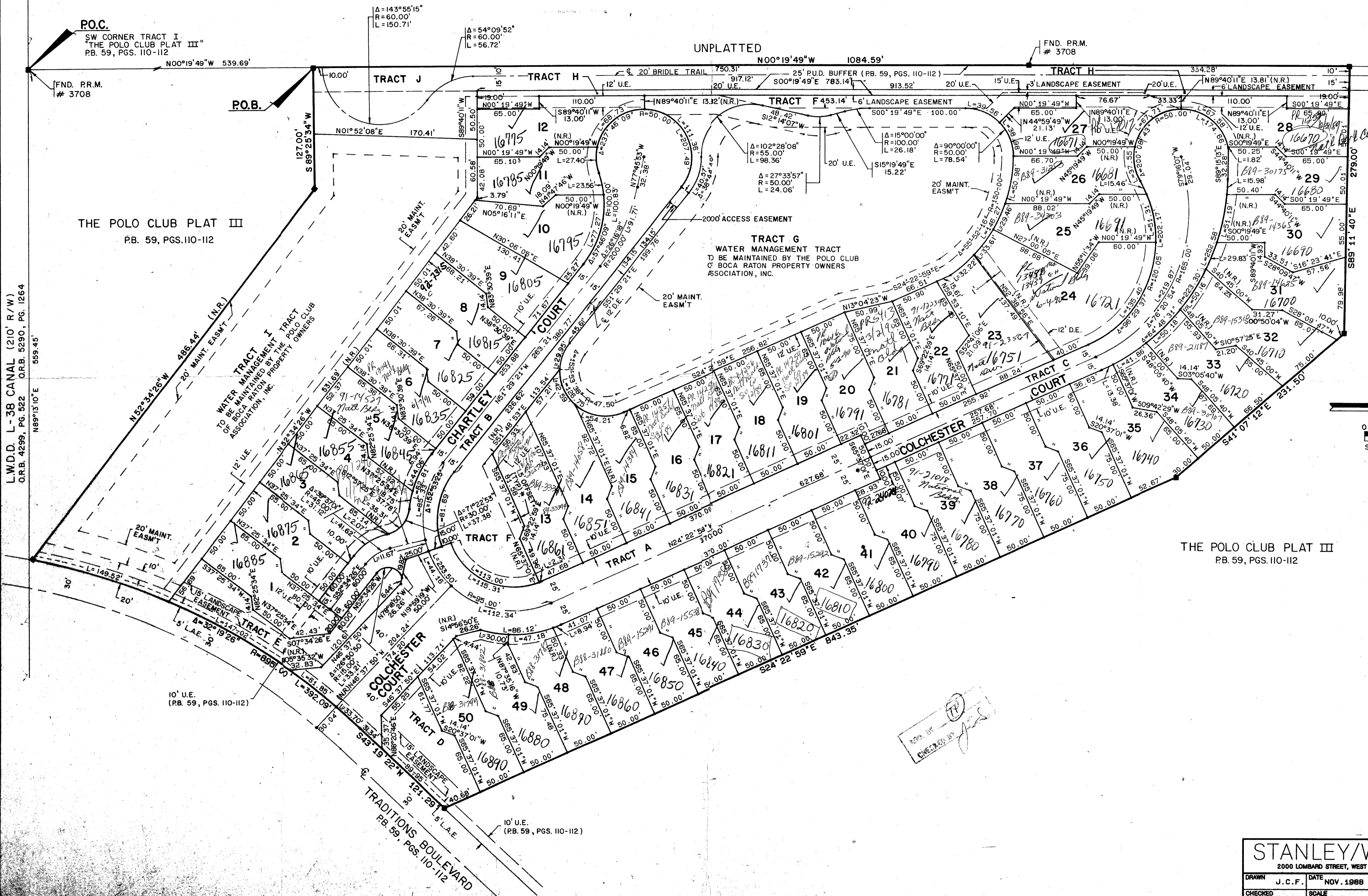
PARCEL P-1 OF THE POLO CLUB  
A PART OF THE POLO CLUB P.U.D.,  
BEING A REPLAT OF A PORTION OF TRACT I, "THE POLO CLUB PLAT III" (P.B. 59 PGS. 110-112)  
SITUATE IN SECTION 27, TOWNSHIP 46 SOUTH, RANGE 42 EAST  
PALM BEACH COUNTY, FLORIDA

1989

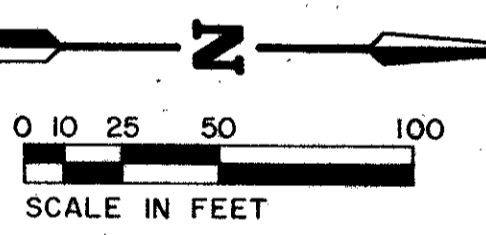
SHEET 3 OF 3

STATE OF FLORIDA  
COUNTY OF PALM BEACH  
THIS PLAT WAS FILED FOR  
RECORD \_\_\_\_\_ DAY OF \_\_\_\_\_  
THIS \_\_\_\_\_ AD, 1989 AND DULY RECORDED  
IN PLAT BOOK \_\_\_\_\_ ON PAGES  
\_\_\_\_\_ AND \_\_\_\_\_  
BY: JOHN B. DUNKLE, CLERK  
\_\_\_\_\_, D.C.

CIRCUIT COURT SEAL



L.W.D. L-38 CANAL (210' R/W)  
O.R.B. 4299, PG. 522 O.R.B. 5290, PG. 1264  
N89°15'10"E 559.45'



STANLEY/WANTMAN, INC.  
PARCEL P-1  
FLOOD MAP 215A  
BOOK 27  
PAGE 24-71  
215 CODE 32445  
T&Z 4-77

NOV 19 1988  
CHECKED BY [Signature]

K-333  
Pet. 84-71  
006  
62/190

STANLEY/WANTMAN, INC.  
2000 LOMBARD STREET, WEST PALM BEACH, FL. 33407 (407) 842-7444  
DRAWN J.C.F. DATE NOV. 1988  
CHECKED R.B.P. SCALE 1"=50'  
DRAWING NO. 08954PL  
PARCEL P-1 OF THE POLO CLUB

\* 1/2" OVERHANG ALLOWANCE AND OFFSET FOR U.S.